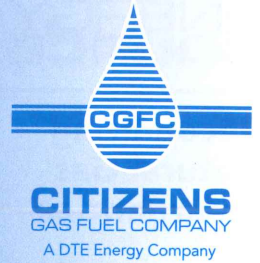


# ENERGY SOURCE SAFETY EDITION



127 North Main Street | P.O. Box 40 | Adrian, MI 49221 | 517-265-2144 | [citizensgasfuel.com](http://citizensgasfuel.com)

## Natural Gas Safety



**If you smell gas.** Don't turn on or off any electrical switches, light matches, use electrical appliances, use your security system, or use a telephone in the location of the leak. They could cause a spark and ignite the gas. Leave the building or area immediately. From an outside phone, away from the leak, call Citizens Gas Fuel Company's Emergency number, which is available 24 hrs. per day, 517-265-2144. The strength of the "rotten egg" odor of natural gas doesn't necessarily indicate the severity of the leak.

Do not store flammable liquids such as gasoline, paint thinner or kerosene near natural gas burning appliances or any source of ignition.

**Citizens Gas Fuel Company's Emergency Numbers  
available 24 hours per day 517-265-2144.**

## Natural Gas Emergency



### FLAMMABLE GAS

**Where you might find a natural gas emergency.** A natural gas emergency can be any situation that puts your safety at risk. Examples are natural gas leaks and damaged underground pipelines or service lines. The Utility Company should investigate a damaged pipeline that is leaking.

Natural gas leaks can occur on indoor gas lines or when outdoor pipelines are damaged. Natural gas pipelines are usually buried and may be marked. However, the markers may not always show the exact location of the pipeline, or the direction it follows.

**Pipeline Markers.** You may have seen some of the yellow pipeline markers along the roadways in open areas. Citizens Gas Fuel Company pipeline markers indicate the approximate location of a natural gas line. Natural gas lines are also buried on private property, supplying gas to homes and businesses. Before you break ground for any outdoor home improvements, please call **MISS DIG at 811** at least three business days in advance to have your underground utility lines marked on your property. Otherwise, use of sharp tools can damage the lines, causing injury or loss of service.

## Recognizing Natural Gas Emergencies

Knowing how to recognize a natural gas emergency will help you to respond more quickly. Signs of a natural gas leak include:

- A "rotten egg" odor
- A blowing or hissing sound
- Dead or discolored vegetation in an otherwise green area
- Flames, if a leak has ignited
- Dirt or dust blowing from a hole in the ground
- Bubbling in wet or flooded areas
- Unusually dry or hardened soil

## Carbon Monoxide Can Be Dangerous

Carbon Monoxide (CO) is a colorless, odorless and tasteless poisonous gas that can be fatal when inhaled. It is sometimes called the "silent killer." Carbon Monoxide comes from fuel-burning appliances that are malfunctioning or improperly installed, including:

- Furnaces
- Gas ranges and stoves
- Gas clothes dryers
- Water heaters
- Portable fuel-burning space heaters
- Fireplaces and wood-burning stoves
- A barbeque grill operated in an enclosed space
- Blocked chimneys or flues
- Cracked or loose furnace exchangers

### When exposure is mild, symptoms can include:

- Slight headache
- Nausea-vomiting
- Fatigue and/or weakness
- Dizziness
- Disorientation or confusion

### When exposure is medium, symptoms can include:

- Throbbing headache
- Drowsiness
- Confusion
- Fast heart rate

### When exposure is high, symptoms can include:

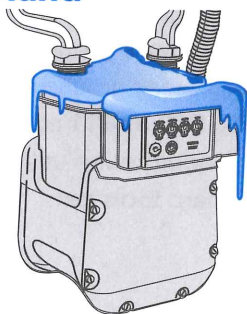
- Convulsions
- Unconsciousness
- Brain damage
- Heart and lung failure

Besides installing and maintaining a CO detector there are other things you can do to prevent carbon monoxide exposure:

- Regularly examine vents and chimney for improper connections
- Every year have the heating system, vents, chimney and flue inspected by a qualified service technician
- Never use a gas range or stove to heat your home

If you experience even mild CO poisoning symptoms, immediately consult a physician. Citizens Gas Fuel Company offers CO checks. If you would like additional information call our service department for details.

## Give Us a Hand



Snow and ice covering your meter could cause problems. Please be sure to give us a hand by cleaning ice and snow from your meter as soon as possible, being careful not to strike it with snow removal equipment.

It is also necessary to keep the shut-off valve beneath your meter clear at all times. This valve needs to be easy to reach in case of an emergency. Our first concern is for your safety, so please be sure both your meter, and the shut-off valve are easily accessible.

If you should experience an interruption in service or accidentally damage our facilities, call us anytime, day or night, at 265-2144. Our representative will be there as soon as possible to help. Thanks for giving us a hand!